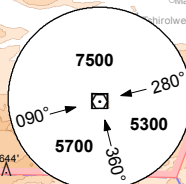
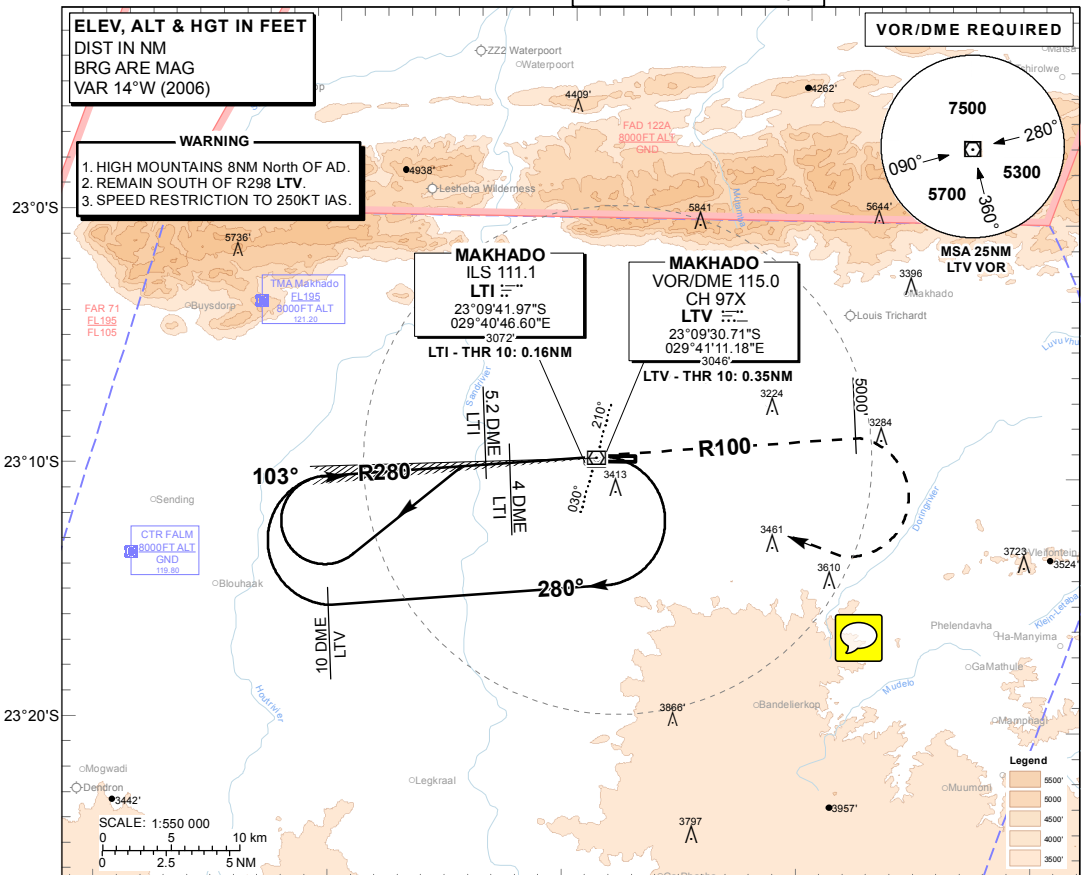


**ELEV, ALT & HGT IN FEET  
DIST IN NM  
BRG ARE MAG  
VAR 14°W (2006)**

**VOR/DME REQUIRED**



**WARNING**  
1. HIGH MOUNTAINS 8NM North OF AD.  
2. REMAIN SOUTH OF R298 LTV.  
3. SPEED RESTRICTION TO 250KT IAS.

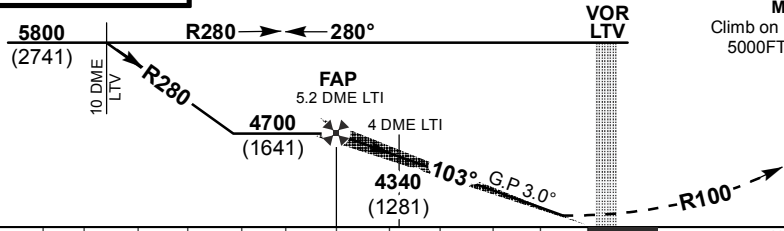


<b>LTI DME DIST</b>	5	4	3	2	1	0.16	
<b>GP ALT (HGT)</b>	4650 (1591)	4340 (1281)	4020 (961)	3700 (641)	3380 (321)	3110 (51)	

**TRANSITION ALT 8000  
TRANSITION LEVEL ATC**

**INA ALT: 5800 or higher MSA**

**MISSED APPROACH:**  
Climb on R100 LTV (OUBD) to 5000FT ALT. At 5000FT ALT turn right to LTV and continue climb to 5800FT ALT.



**RDH 50**

**THR ELEV 3059  
NM to/from THR RWY 10**

<b>OCA (H)</b>	<b>A</b>	<b>B</b>	<b>C</b>	<b>D</b>	<b>E</b>	<b>GS</b>	<b>KT</b>	80	100	120	140	160	180	200	220
						5.2 DME LTI-THR	M:S	3:44	2:59	2:29	2:08	1:52	1:39	1:29	1:21
<b>ILS</b>	3259(200)	3259(200)	3260(201)	3269(210)	3269(210)	Rate of descent	FPM	425	531	637	743	849	955	1061	1168

**NOTE:**  
1. When approaching LTV via R070 through R130 INBD, use phraseology "Request Procedure approach."  
2. LTI DME reading at THR is 0.16 NM.

CHANGE: LTI & LTV coordinates